

**EDGE SOCIAL IMPACT**  
PARTNERS



# **EDGE SOCIAL IMPACT PARTNERS (ESIP)**



Enabling sustainable development through innovation,  
research, and impact.



# Table Of Contents

## Who We Are

3

## Growing Challenges

4

## Our Expertise

5

- Social policy and systems research
- Monitoring, Evaluation, Research and Learning (MERL)

i  
ii

## The Opportunity For Impact

7

- Health systems strengthening
- Social protection
- Climate-Smart Agriculture and Food Production
- Private sector engagement and development
- Digital innovation and artificial intelligence
- Climate action and nature conservation

i  
ii  
iii  
iv  
v  
vi

## The Opportunity

13

## Contact Us

14



# Who We Are:



At Edge Social Impact Partners (ESIP), our mission is to enable sustainable development across critical social sectors by ensuring programmes deliver measurable and lasting impact.

We work at the intersection of research, innovation, and implementation to transform systems and improve lives.

We partner with national governments, international non-governmental organizations (INGOs), funders, private sector actors, and local communities to drive accountability, measure impact, and implement evidence-based strategies.

With a deep understanding of local contexts and global trends, we empower stakeholders to address complex social challenges, foster resilience, and achieve sustainable outcomes.

**Our vision** is to help create a world where every individual can thrive in equitable, sustainable systems that promote health, economic empowerment, and environmental stewardship. By combining robust research methodologies with grassroots-level engagement, we ensure our work is both impactful and inclusive.



# GROWING CHALLENGES

## SUSTAINABLE DEVELOPMENT GOALS



The world is facing unprecedented challenges that demand immediate action.



From fragile health systems unable to meet the demands of growing populations.



To the devastating effects of climate change on food security.



The need for innovative, evidence-based solutions is critical.

Social inequalities, lack of access to quality education, and inadequate support for vulnerable communities further exacerbate these issues.

ESIP was established to help improve response in bridging these gaps, bringing together expertise and resources to create meaningful and lasting change.



# OUR EXPERTISE:

## Key Components of Social Impact Assessment

1 Stakeholder Engagement

2 Social Baseline Assessment

3 Impact Identification and Assessment

4 Mitigation and Enhancement Measures

5 Monitoring and Evaluation

## Social Policy and Systems Research

We focus on identifying and addressing critical gaps in social systems to create equitable solutions.

By engaging communities and stakeholders, we develop policies and programmes rooted in evidence and tailored to local needs.

## For Example,

We are laying the groundwork for research initiatives that explore the intersection of education access and economic empowerment, aiming to inform strategies that governments can adopt to improve social equity.



# Monitoring, Evaluation, Research, and Learning (MERL)

Through our MERL expertise, we:

- Design and implement robust monitoring frameworks to track programme performance.
- Develop tools that help partners capture data in real-time, enabling agile decision-making.
- Foster a culture of learning by translating insights into actionable recommendations.

**Our approach emphasizes** capacity building, ensuring that local actors can sustain and scale interventions long after our involvement. For instance, we are in the process of piloting a small-scale evaluation tool that rural health centres can use to measure patient outcomes more effectively





# THE OPPORTUNITY FOR IMPACT

---

## Health Systems Strengthening:

We aim to support the development of resilient healthcare systems by focusing on key areas such as:

- Training frontline health workers to deliver high-quality care.

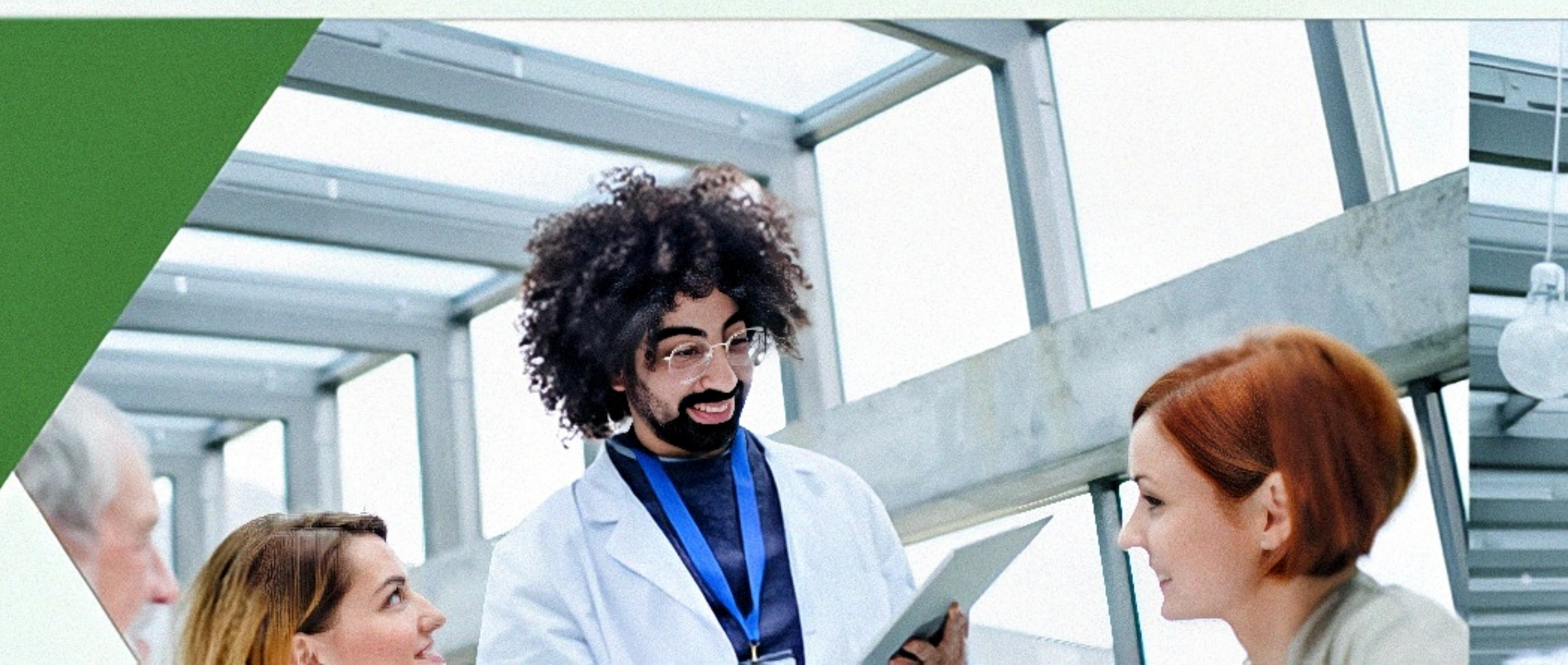
- Strengthening supply chains for essential medicines and equipment.

- Advocating for policies that prioritise health equity.

Over half of the global population does not have access to essential health services, with fragile healthcare systems disproportionately affecting low-income communities. (WHO).

This lack of access is particularly severe in low-income communities, where healthcare systems are often under-resourced and unable to meet the needs of the population.

Efforts to address these disparities are crucial for improving global health outcomes and ensuring that everyone has the opportunity to lead a healthy life







# Social Protection

---

Our work in social protection seeks to empower vulnerable populations through programmes that address systemic barriers. This includes:

- Developing frameworks for sustainable school feeding initiatives.

- Advocating for policies that promote gender equality and inclusion.

- Piloting community-led early childhood development programmes.



# Climate-Smart Agriculture and Food Production

By integrating innovation into agriculture, we aim to:

---

- Promote practices that mitigate the effects of climate change.

- Enhance food security through the adoption of sustainable farming techniques.

- Support local producers in accessing markets and scaling their operations.

The Opportunities we see: Climate-smart agriculture presents a significant opportunity to improve resilience among smallholder farmers.

By adopting innovative techniques such as crop diversification and solar-powered irrigation, communities can mitigate the effects of climate change while improving productivity.





# Private Sector Engagement and Development

We believe that empowering local enterprises is key to sustainable development. Our support includes:

- Providing technical assistance to SMEs.
- Facilitating access to inclusive financial services.
- Building partnerships between local businesses and global markets.

This includes micro-loans for women entrepreneurs, mobile banking solutions for remote communities, and capacity-building programmes that empower local enterprises.

What does financial inclusion look like in our local communities? Financial inclusion means creating opportunities for individuals and small businesses to access affordable financial services.



# Digital Innovation and Artificial Intelligence.

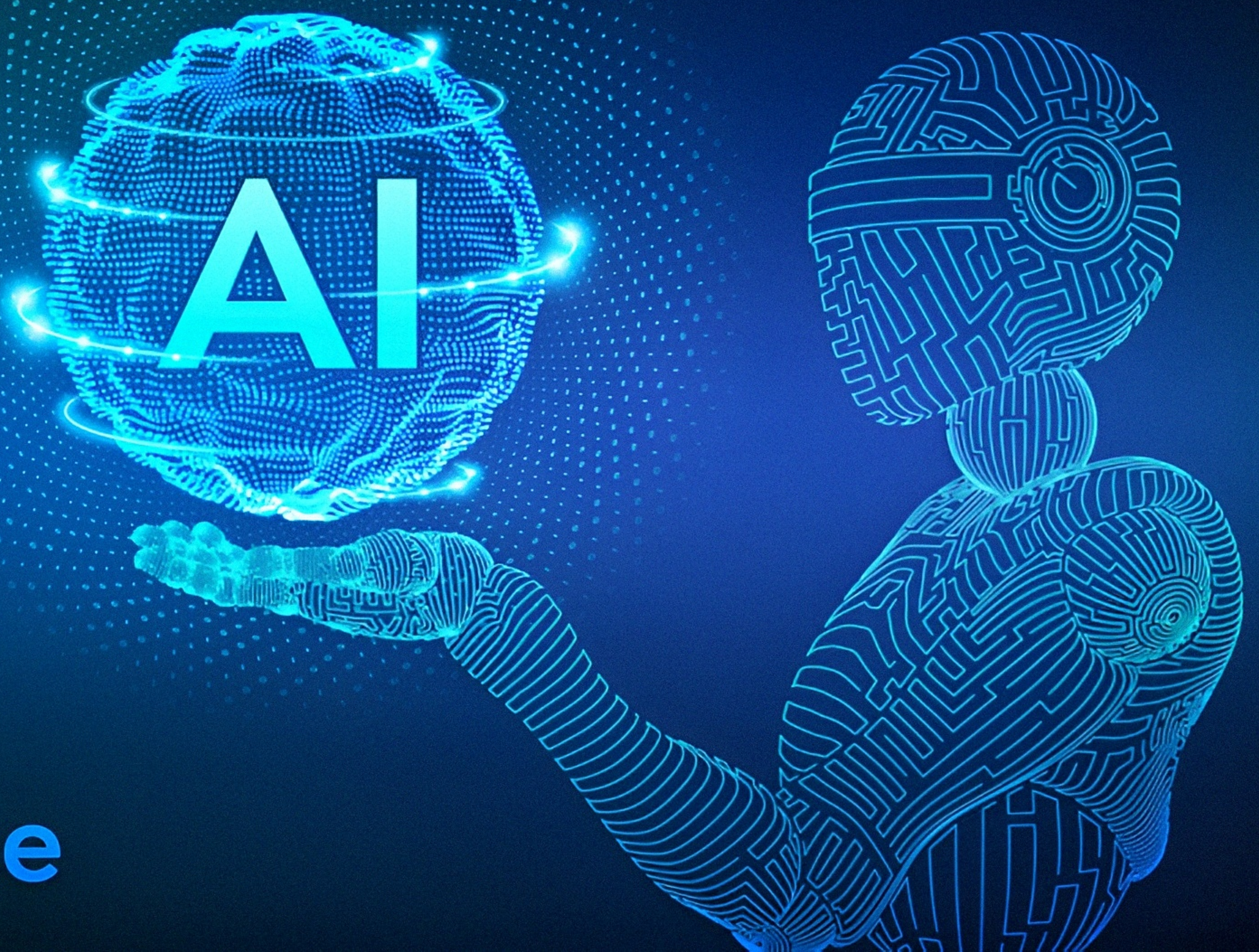
Digital technology has the potential to transform social sectors. We focus on:

- Exploring applications of AI to improve healthcare diagnostics.

- Supporting the development of digital platforms that enhance service delivery.

- Promoting financial inclusion through mobile technology.

## Artificial Intelligence





# Climate Action and Nature Conservation

We are committed to advancing sustainable environmental practices by:

1.

Partnering with local communities to implement reforestation projects.

2.

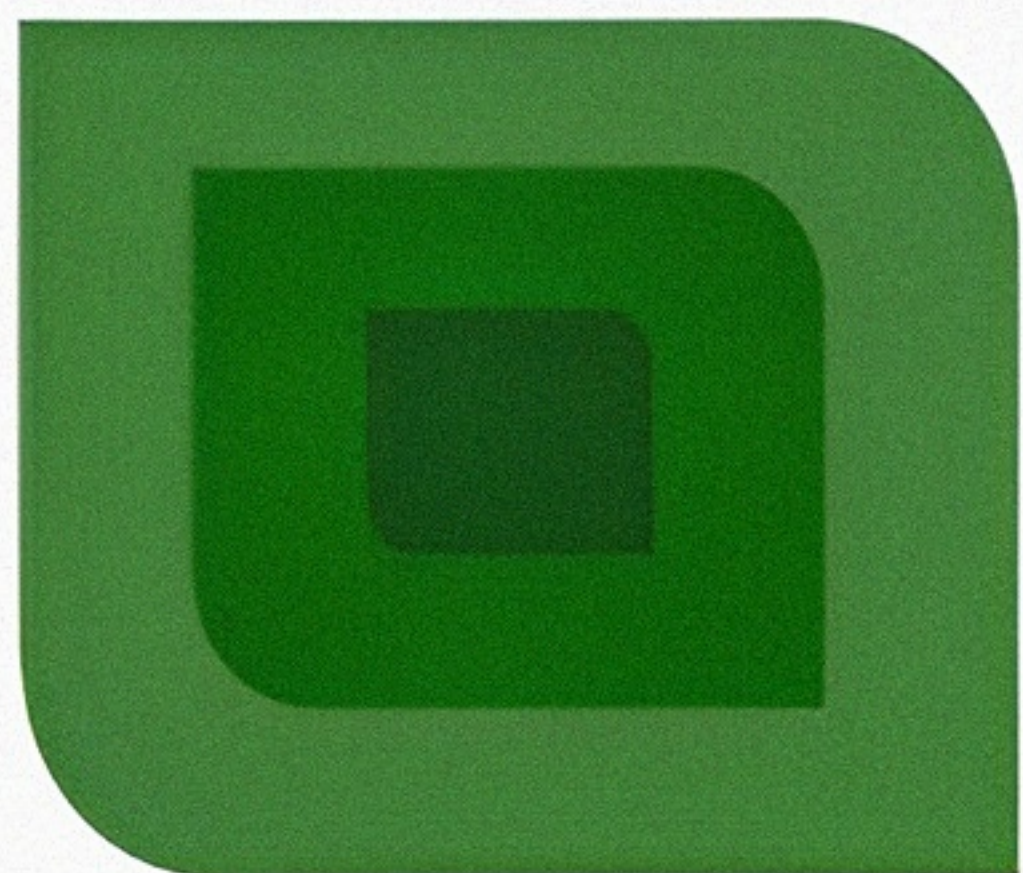
Supporting circular economy initiatives to reduce waste and conserve resources

3.

Developing strategies to help organisations achieve net-zero goals.







# THE OPPORTUNITY



By partnering with governments, private entities, and communities, ESIP has the potential to create transformative change.

Our initiatives are designed to address systemic issues, ensuring that every stakeholder—from local farmers to policymakers, benefits from sustainable, evidence-based solutions.







# CONTACT **US:**

---

Tel: +2348029584568

Email: [sy@edgesocialimpactpartners.org](mailto:sy@edgesocialimpactpartners.org)

